

BISCAYNE BAY



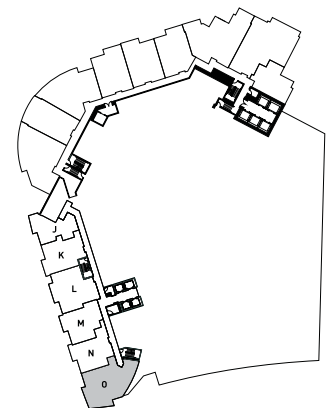
LOFT 0

2 BEDROOM • 2.5 BATH • TERRACE

Unit Area: 1295 sq ft 120.30 m²

Terrace: 214 sq ft 19.88 m²

TOTAL AREA: 1509 sq ft 140.18 m²



All dimensions are approximate and all floor plans and development plans are subject to change by the developer without notice. Stated dimensions are measured to the exterior boundaries of the exterior walls and the centerline of interior demising walls and in fact vary from the dimensions that would be determined by using the description and definition of the "Unit" set forth in the Declaration (which generally only includes the interior airspace between the perimeter walls and excludes interior structural components).